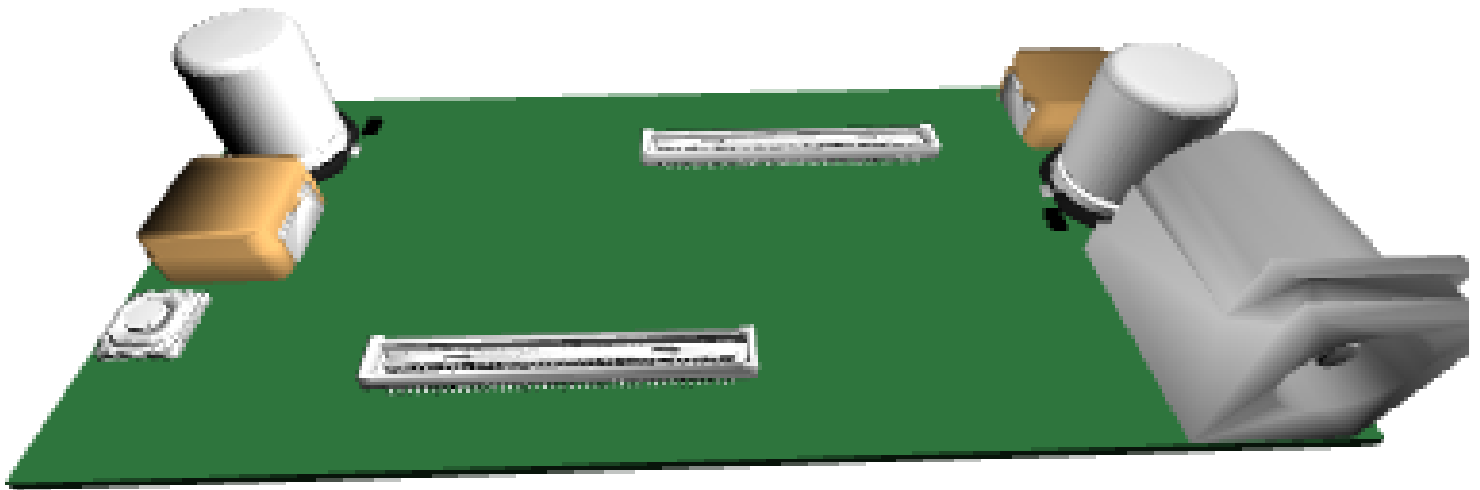


# Intel Joule Module Interposer



**gumstix**<sup>®</sup>

dream, design, deliver™



Made with  
**geppetto**<sup>™</sup>

Gumstix, Inc. shall have no liability of any kind, express or implied, arising out of the use of the Information in this document, including direct, indirect, special or consequential damages.

Gumstix, Inc. may have patents, patent applications, trademarks, copyrights, trade secrets or other intellectual property rights pertaining to Gumstix products described in this document (collectively "Gumstix Intellectual Property").

Except as expressly provided in any written license or agreement from Gumstix, Inc., this document and the information contained therein does not create any license to Gumstix's Intellectual Property.

The Information contained herein is subject to change without notice. Revisions may be issued regarding changes and/or additions.

Copyright © 2016, Gumstix, Inc. All rights reserved.

## Board Description

Intel Joule Module Interposer board with (optional) onboard EEPROM

## Board Dimensions

7.4cm x 3.35cm

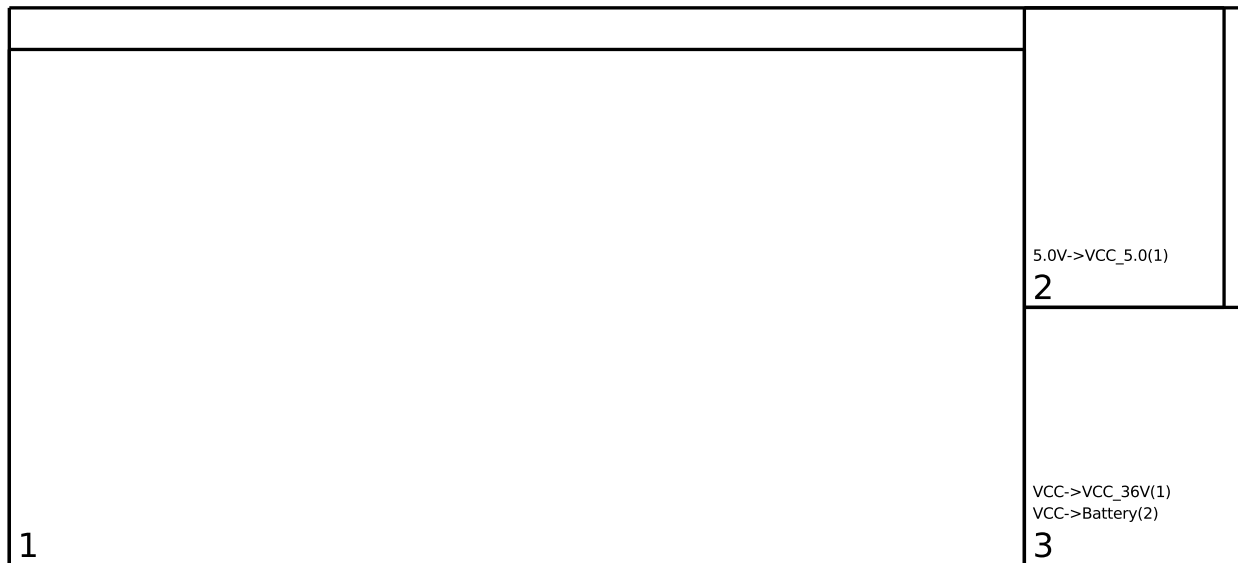


# Contents

<b>1</b>	<b>Modules on Board</b>	<b>1</b>
1.1	COM Connectors . . . . .	1
1.1.1	Intel Joule Module Connector (v8) (1) . . . . .	1
1.2	Power . . . . .	1
1.2.1	5V/5A Regulator (v3) (2) . . . . .	1
1.3	Power Connectors . . . . .	1
1.3.1	Barrel Connector (20V 3A) (v2) (3) . . . . .	1
<b>2</b>	<b>Module Connections Graph</b>	<b>2</b>
<b>3</b>	<b>Module Power Graph</b>	<b>3</b>



## 1 Modules on Board



### 1.1 COM Connectors

#### 1.1.1 Intel Joule Module Connector (v8) (1)

- VCC\_5.0 from 5V/5A Regulator (2)
- VCC\_36V from Barrel Connector (20V 3A) (3)

### 1.2 Power

#### 1.2.1 5V/5A Regulator (v3) (2)

Takes 6 - 36V input from Barrel Connector (20V 3A) (3) and provides up to 5A at 5V to:

- Intel Joule Module Connector (1)

### 1.3 Power Connectors

#### 1.3.1 Barrel Connector (20V 3A) (v2) (3)

This power jack is compatible with Gumstix 20V/3A DC power adapter using a barrel connector.

This power jack provides 20V to the following modules:

- 5V/5A Regulator (2)
- Intel Joule Module Connector (1)



## 2 Module Connections Graph

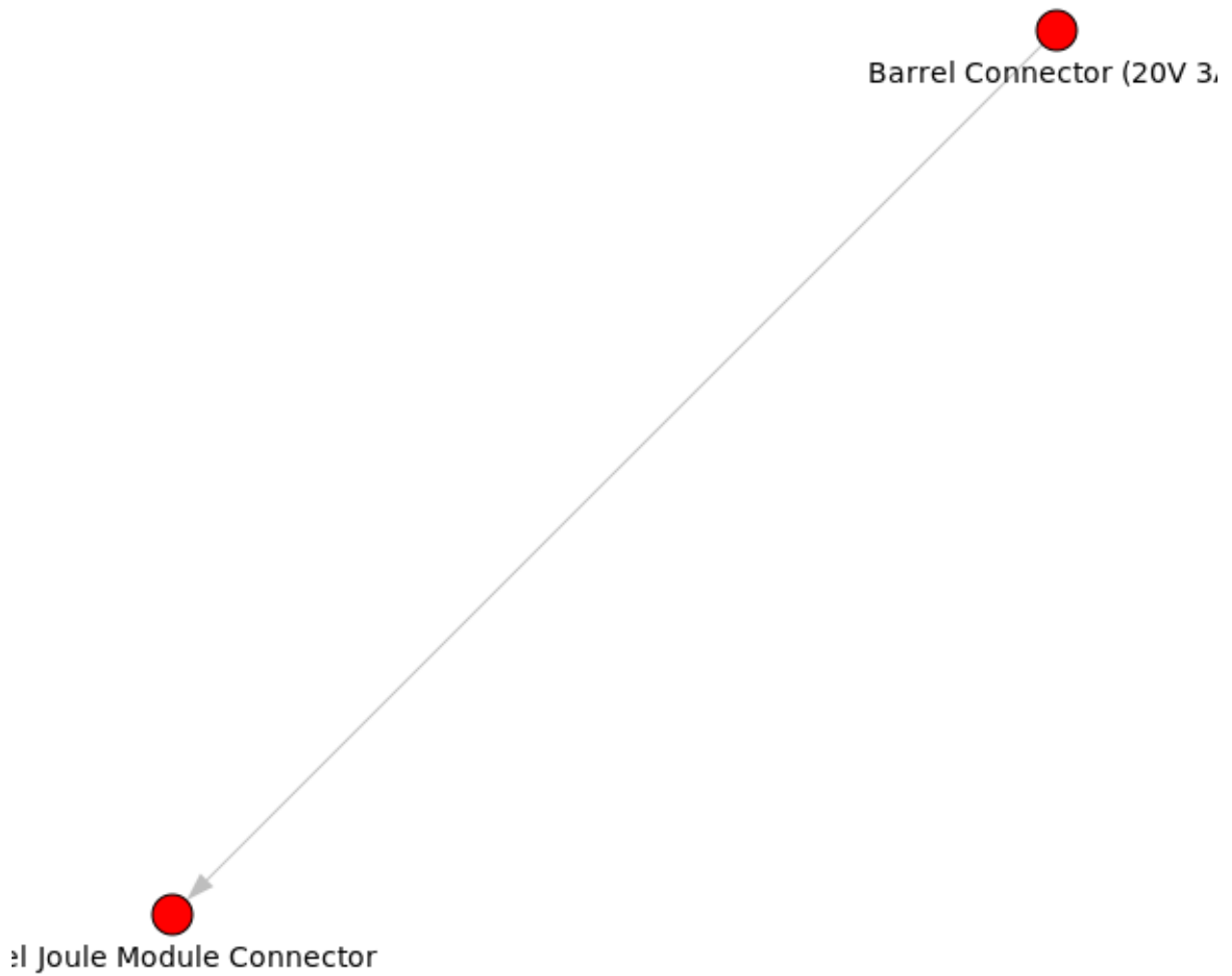


Figure 1: excludes power modules



### 3 Module Power Graph

